



BUSINESS SALE PRICE: \$30,000

DEMOGRAPHICS

	1 mile	3 miles	5 miles
Estimated Population	10,935	50,714	83,618
Avg. Household Income	\$116,045	\$114,235	\$130,692

- Turn key salon
- All furniture, fixtures and equipment
- 291 Highway frontage
- Save yourself the build out



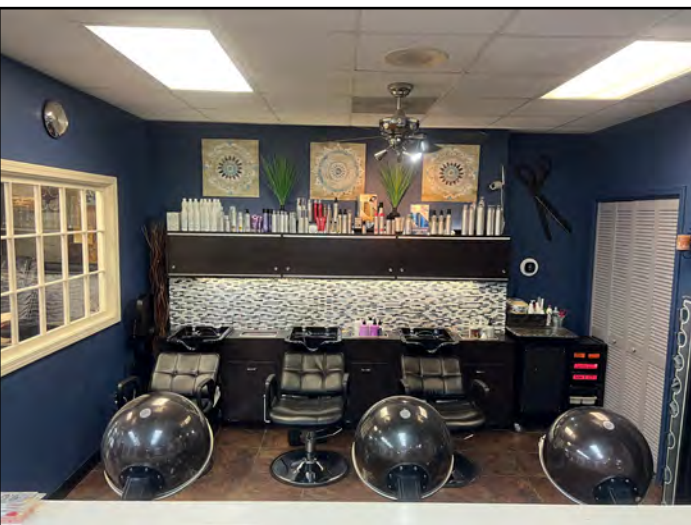
CLICK HERE TO VIEW MORE LISTING INFORMATION

For More Information Contact:

BILL MAAS, CCIM | 816.412.7392 | bmaas@blockandco.com

Exclusive Agent

PHOTOS



PHOTOS



EQUIPMENT LIST

1. Waiting Area
 - a. TV
 - b. All Chairs
 - c. Fireplace
 - d. Shelves
 - e. Coffee Pot
 - f. All Decorations in Waiting Area

2. Shampoo Area
 - a. 3 Dryer Chairs
 - b. 3 Shampoo Chairs
 - c. 3 Shampoo Bowls
 - d. Shampoo Cabinet
 - e. 2 Dryer Chair Tables
 - f. Wax Pot & Supplies with Cabinet

3. Hair Stations
 - a. All Stylist Stations
 - b. 6 Black Stylist Chairs
 - c. MATS
 - d. Power Strips
 - e. Mirrors
 - f. Appliance Holders
 - g. Lighting
 - h. Security Cameras
 - i. Radio
 - j. Brooms
 - k. Eye-Vac
 - l. Nail Table with Chairs
 - m. Vacuum Sweeper (SHARK)

4. Pedicure Spa
 - a. All Spa Supplies
 - i. Towels
 - ii. Cleaner
 - b. Polish

5. Washer/Dryer
 - a. Mini Fridge
 - b. Vending Machine with Coin Changer



FULL SERVICE SALON

Lee's Summit, Missouri | **CONFIDENTIAL**

**BUSINESS
FOR
SALE**

Subject Site	1 mi radius	3 mi radius	5 mi radius
Lee's Summit, MO 64086			
Population			
2023 Estimated Population	10,935	50,714	83,618
2028 Projected Population	11,070	52,137	87,167
2020 Census Population	10,977	50,408	83,649
2010 Census Population	10,653	48,244	76,433
Projected Annual Growth 2023 to 2028	0.2%	0.6%	0.8%
Historical Annual Growth 2010 to 2023	0.2%	0.4%	0.7%
2023 Median Age	35.0	37.3	39.2
Households			
2023 Estimated Households	4,465	20,635	32,857
2028 Projected Households	4,444	21,104	33,996
2020 Census Households	4,431	20,229	32,407
2010 Census Households	4,204	19,029	29,312
Projected Annual Growth 2023 to 2028	-	0.5%	0.7%
Historical Annual Growth 2010 to 2023	0.5%	0.6%	0.9%
Race and Ethnicity			
2023 Estimated White	74.4%	77.8%	78.3%
2023 Estimated Black or African American	13.7%	12.1%	12.0%
2023 Estimated Asian or Pacific Islander	3.3%	2.0%	2.3%
2023 Estimated American Indian or Native Alaskan	0.4%	0.3%	0.2%
2023 Estimated Other Races	8.2%	7.8%	7.1%
2023 Estimated Hispanic	6.7%	6.3%	5.6%
Income			
2023 Estimated Average Household Income	\$116,045	\$114,235	\$130,692
2023 Estimated Median Household Income	\$83,994	\$87,739	\$99,103
2023 Estimated Per Capita Income	\$47,394	\$46,534	\$51,423
Education (Age 25+)			
2023 Estimated Elementary (Grade Level 0 to 8)	1.8%	1.6%	1.5%
2023 Estimated Some High School (Grade Level 9 to 11)	2.8%	2.7%	2.2%
2023 Estimated High School Graduate	20.3%	22.2%	20.2%
2023 Estimated Some College	18.7%	22.6%	21.2%
2023 Estimated Associates Degree Only	9.6%	10.2%	9.3%
2023 Estimated Bachelors Degree Only	31.6%	26.2%	28.1%
2023 Estimated Graduate Degree	15.2%	14.5%	17.5%
Business			
2023 Estimated Total Businesses	475	2,708	3,824
2023 Estimated Total Employees	4,671	28,664	37,772
2023 Estimated Employee Population per Business	9.8	10.6	9.9
2023 Estimated Residential Population per Business	23.0	18.7	21.9

©2023, Sites USA, Chandler, Arizona, 480-491-1112 Demographic Source: Applied Geographic Solutions 4/2023, TIGER Geography - RS1

